

Weekly

Shoemaker	Vacant Lot at Shoemaker	Bandstand	River Walk / Church Lot	Old Arc Park / Town Park	Backside Shoemaker
-----------	-------------------------	-----------	-------------------------	--------------------------	--------------------

Bi -Weekly

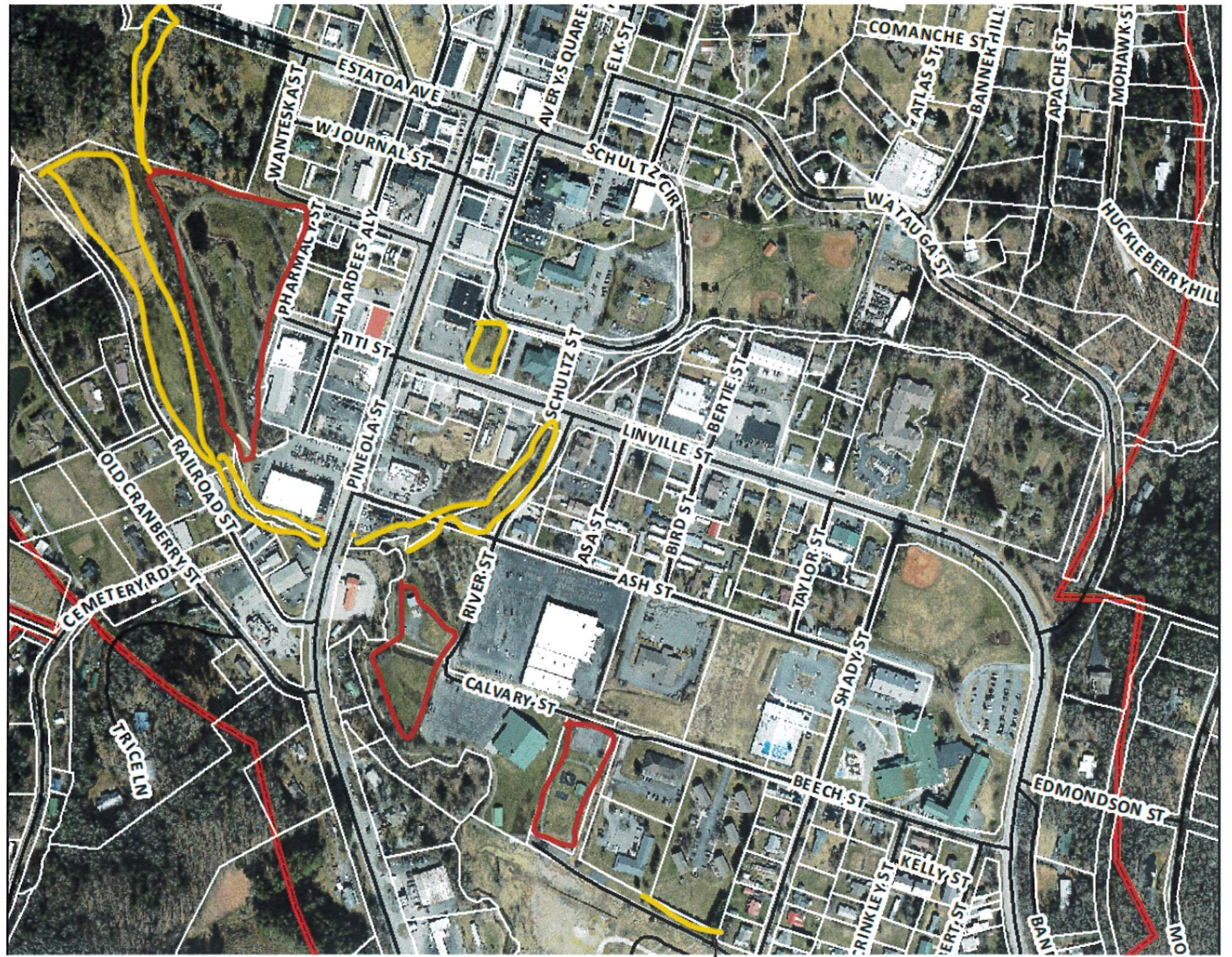
Sokassa / Well 2	Sokassa RD	Wyatt Rd	Tweetsie Grinder Area	WWTP	Maybel's Corner Well 1	Ingles Pump Station	Lot on Corner of Old Public and Cranberry	Backside Shoemaker	Lot beside CVS (Gazabo)	Well 5	Along River between CBBQ and NAPA & Kaye's	181 (in) Watauga to Wes Brewer	181 (out) Elem to Wes Brewer	Town Hall
------------------	------------	----------	-----------------------	------	------------------------	---------------------	---	--------------------	-------------------------	--------	--	--------------------------------	------------------------------	-----------

Monthly

						1	2	3
Tank 1	Tank 2 and Driveway back to pavement	Huckleberry Hill <small>Weed eat down road side</small>	Weed eat Mohawk St right side	Tank 3 and road down	Corners of 3 Nails and Belkis	Fallout from River walk to FD	Fallout from Ingles to Pershing ST	Fallout Old Toe River

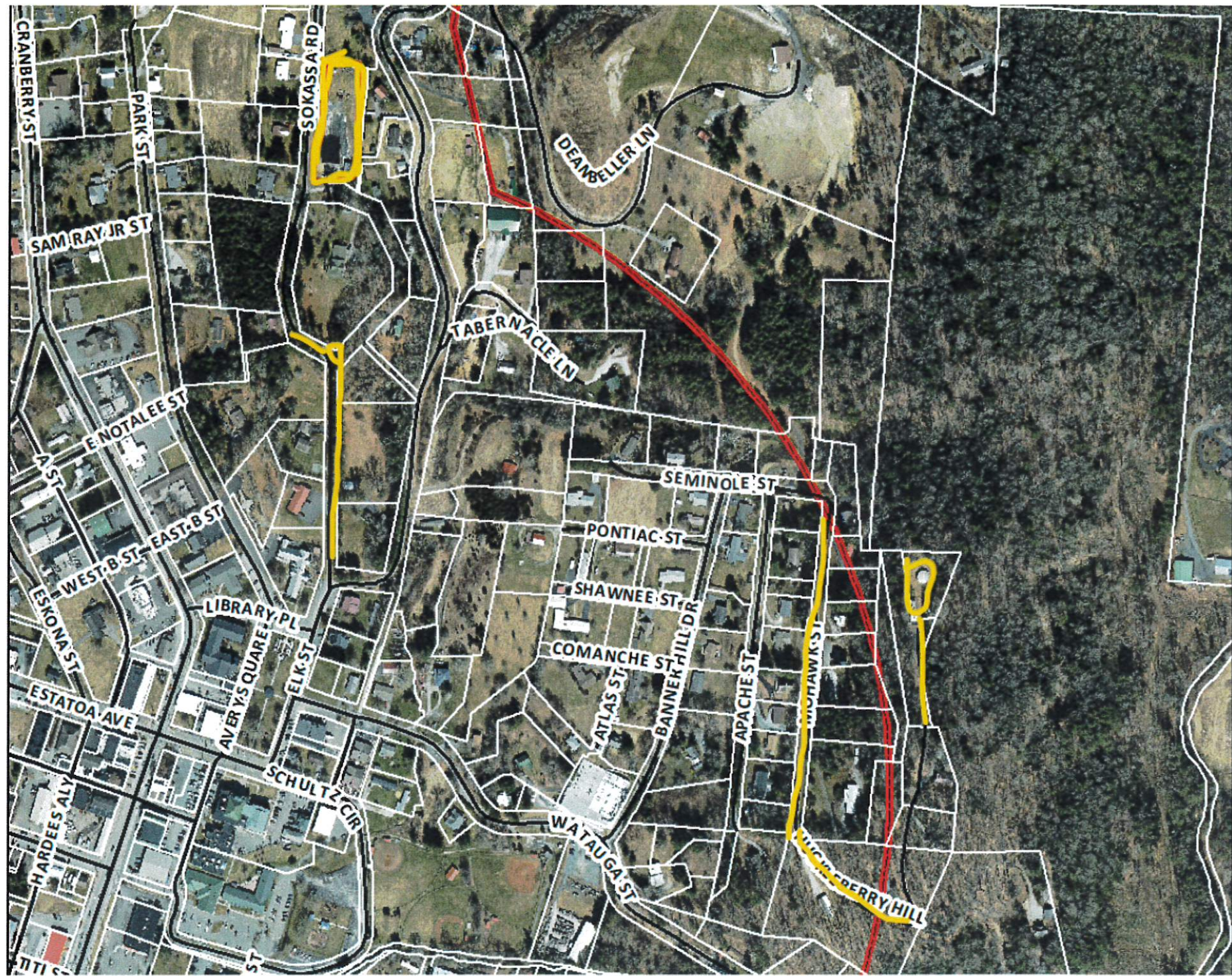
Fallout 1

Shoemaker / River walk / Town Park



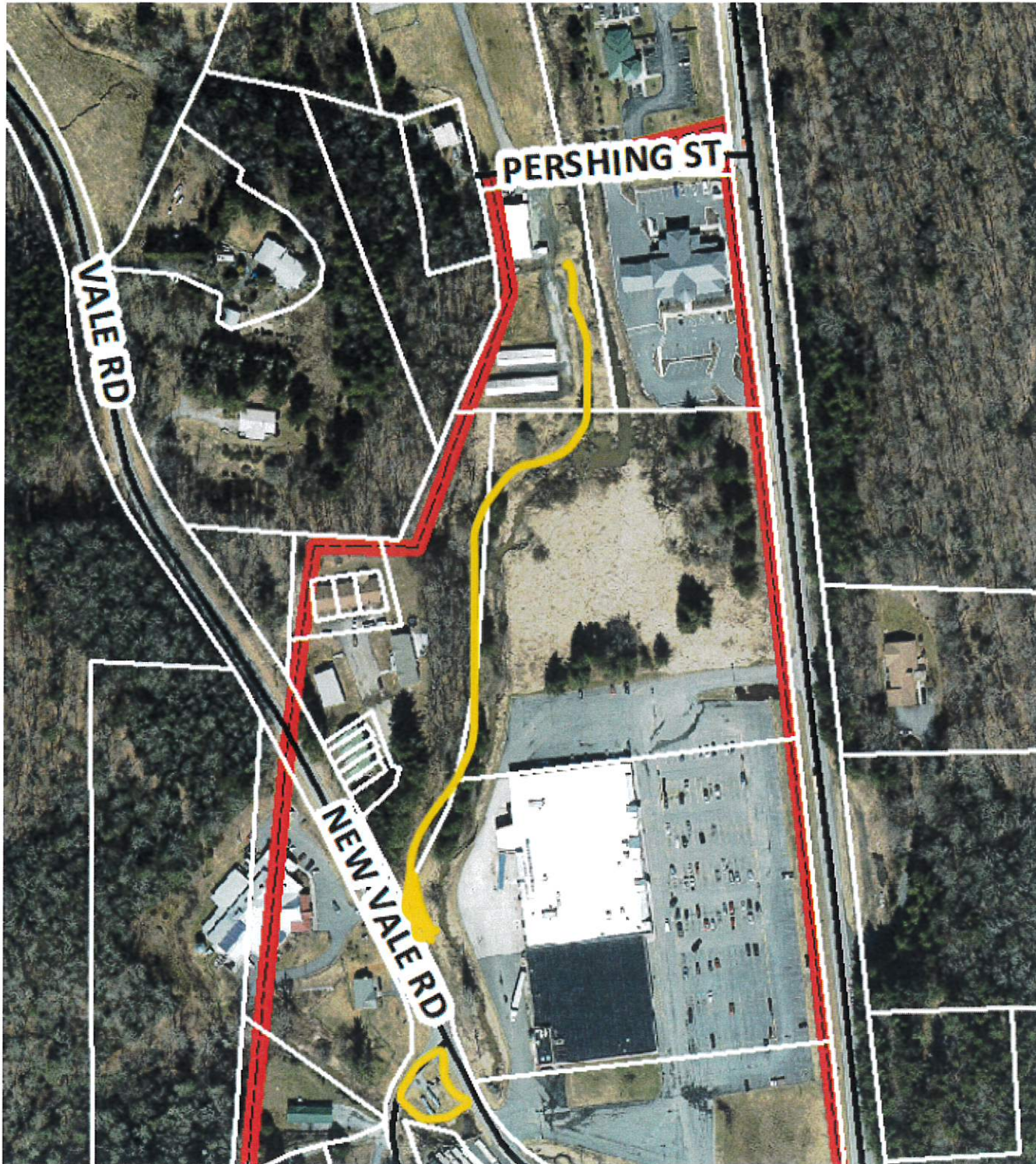
Tree line on Wyatt - weedcut

Sokassa Road weedeat maintenance lot mow/weedeat



Tank 2 mow/
weedeat

mohawk / Huckleberry
weedeat only



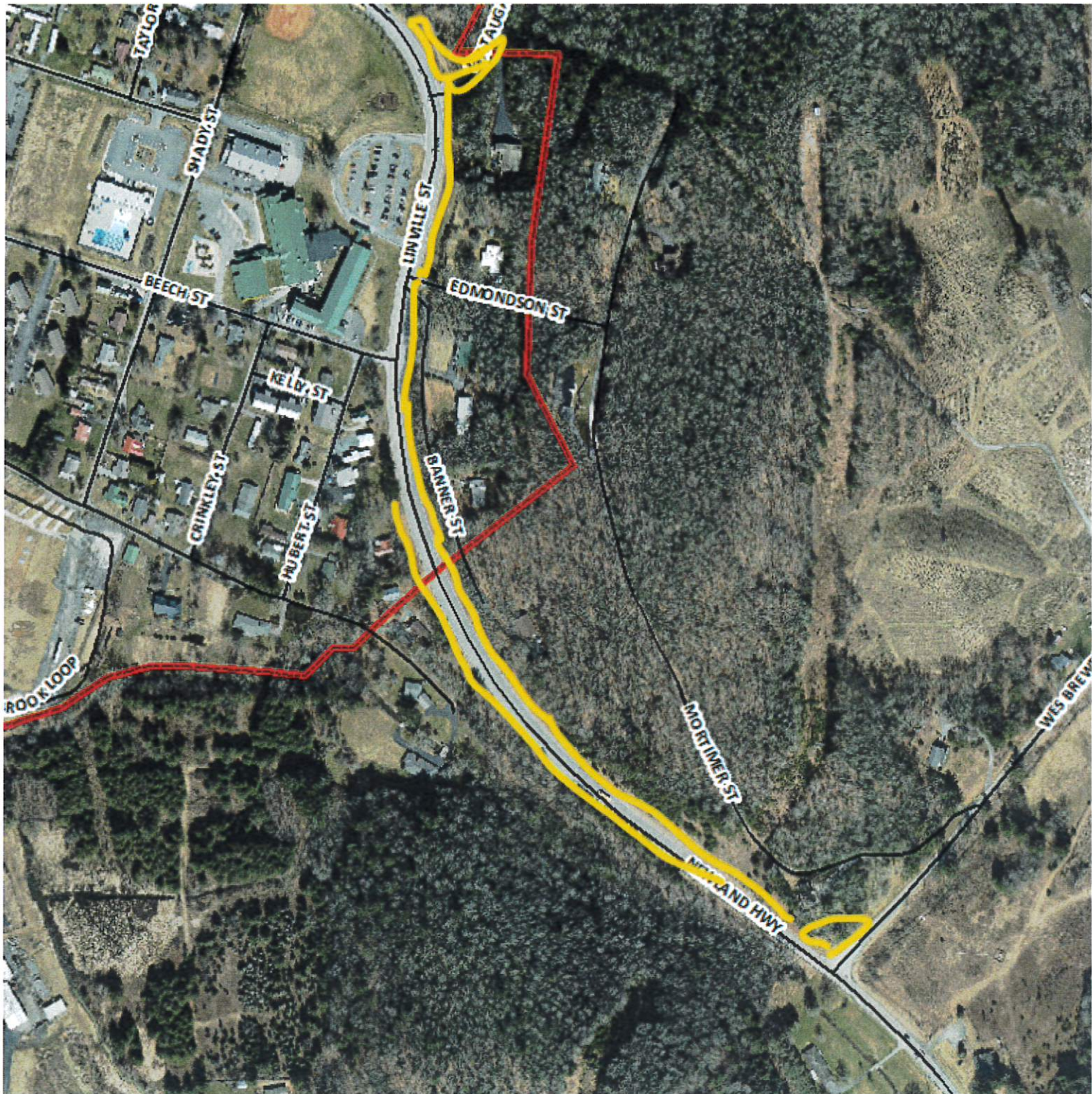
Fallout line
2

Ingles Pumping
station

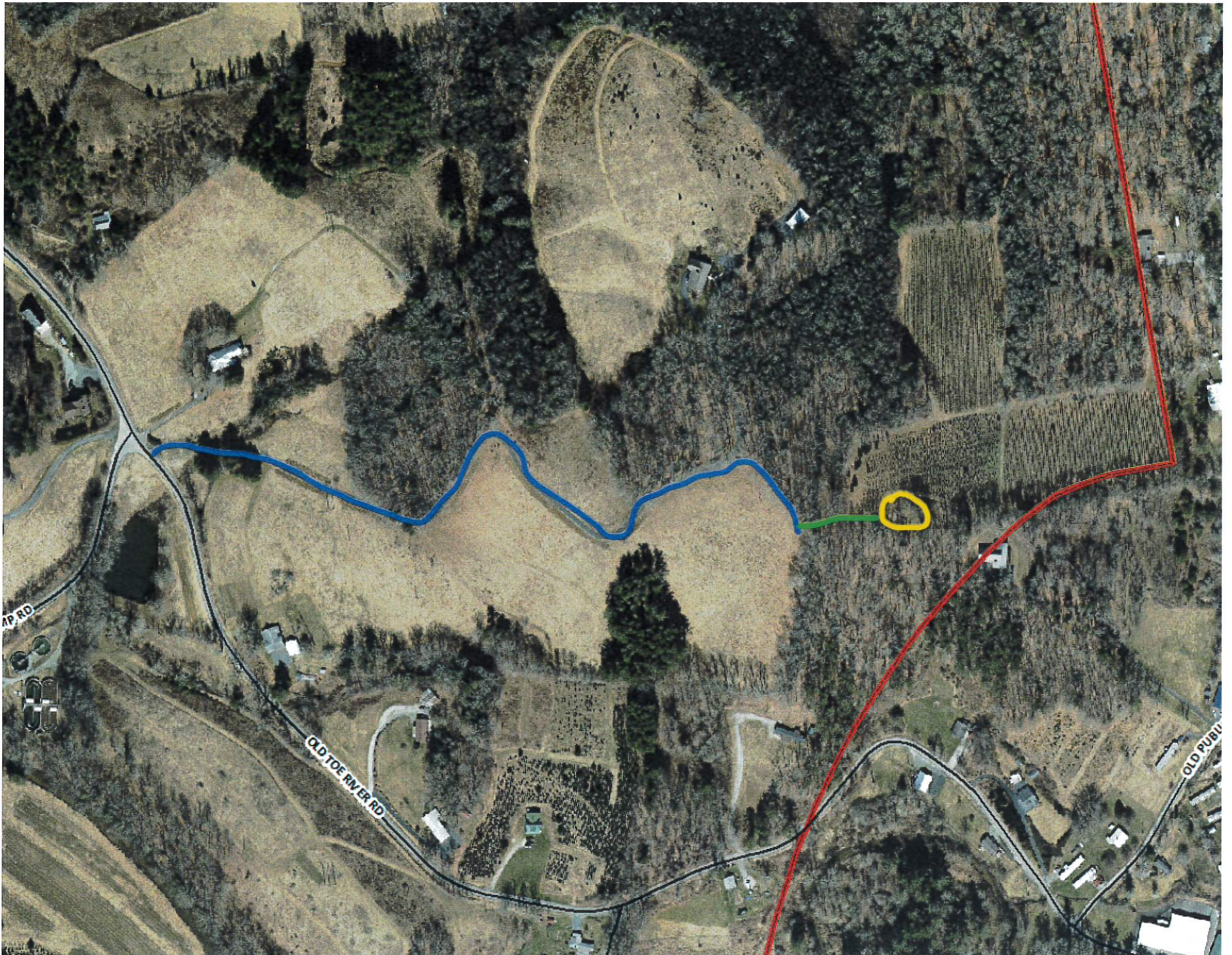


Well 5 at
TRW

Tank 3
above middle
school



181/Linville
Hwy In/out

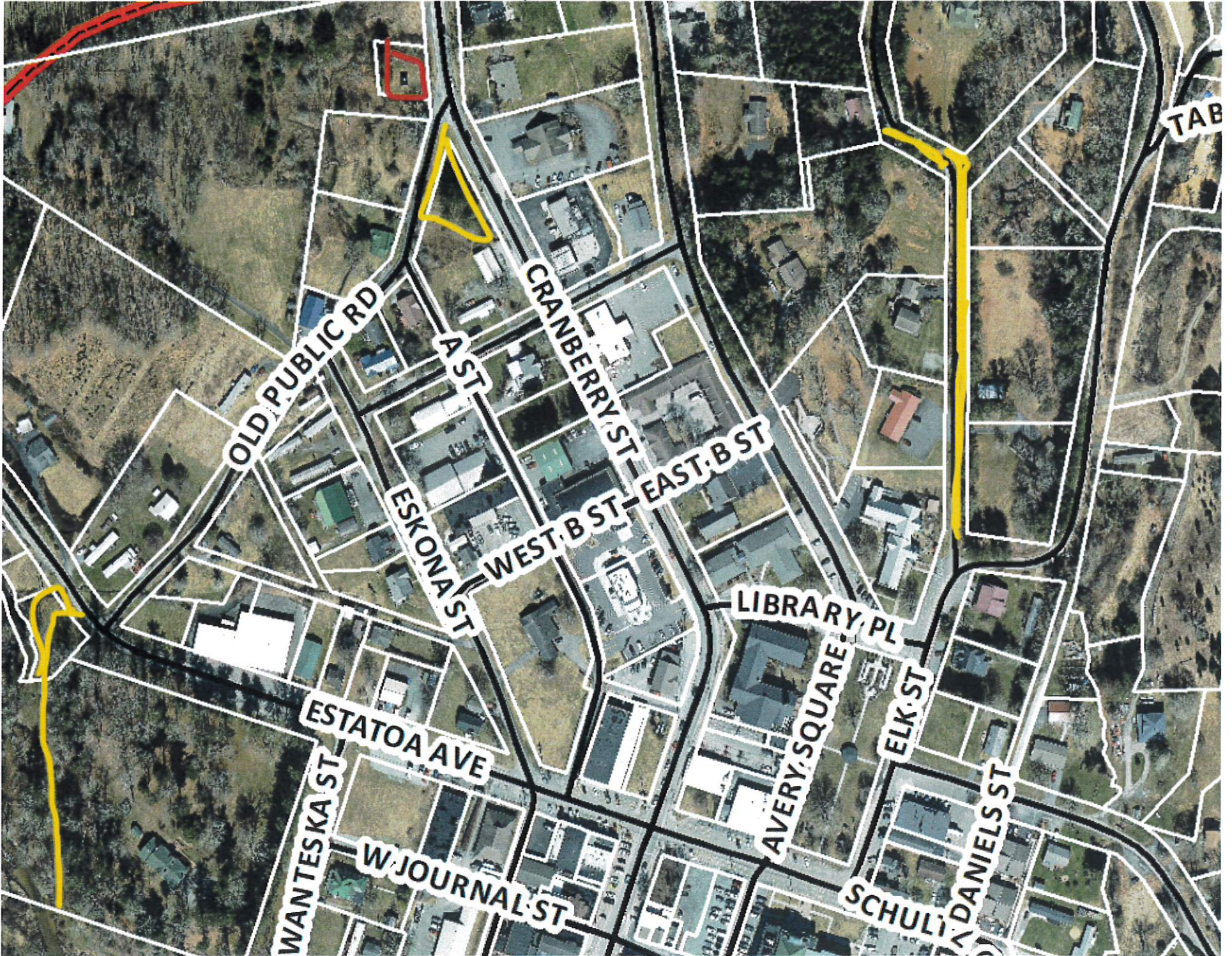


Blue Drive / Green walk

Tank 1

Well 1 / corner lot

↓ Solkassa Red Weedeat



Fall out

TAB

OLD PUBLIC RD

A ST

CRANBERRY ST

WEST B ST

EAST B ST

ESKONA ST

LIBRARY PL

ESTATOA AVE

ELK ST

WANTESKA ST

W JOURNAL ST

EVERY SQUARE

SCHULI

DANIELS ST

WWTP



Below Tweetsie

